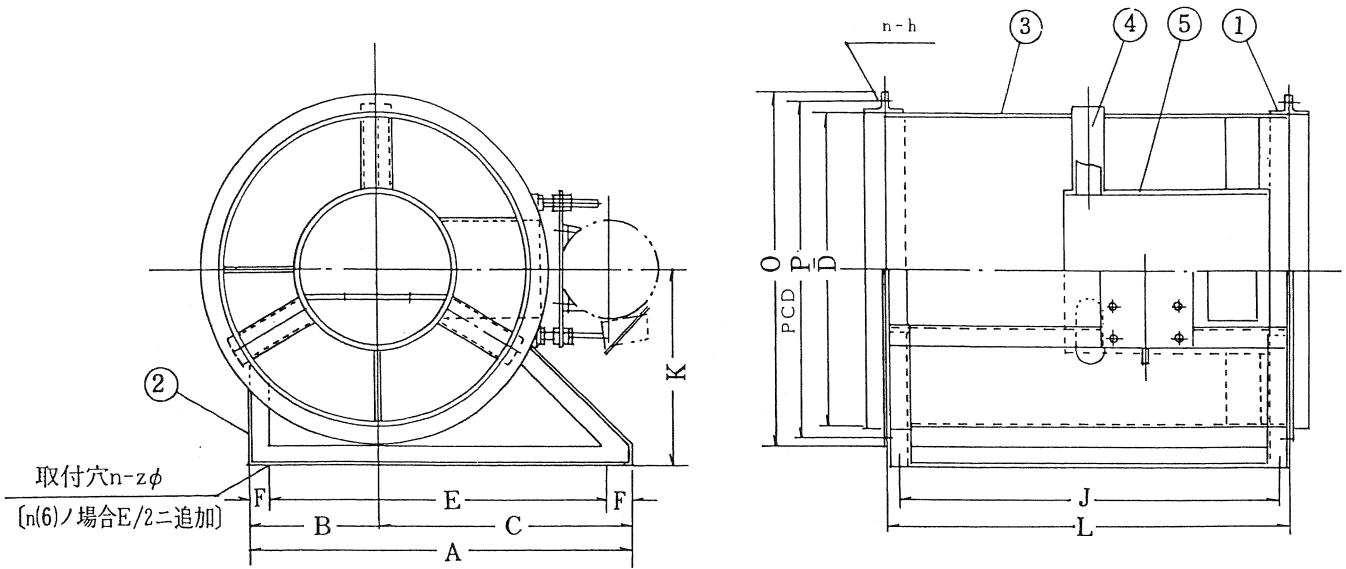


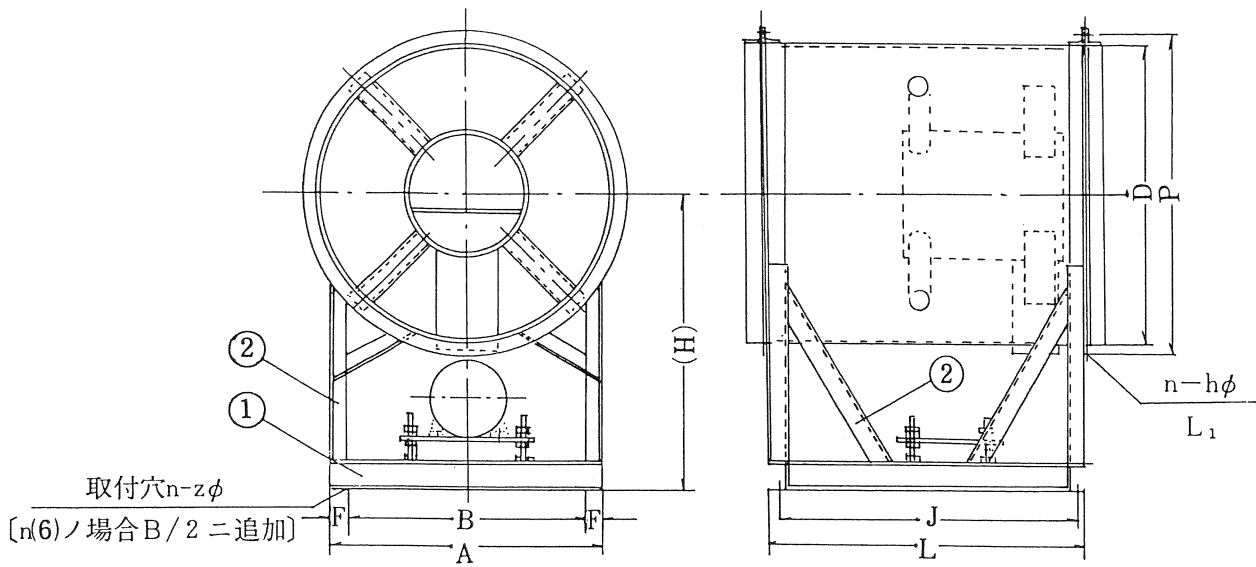
# ●寸法表(1)



型式	寸法表 (mm)													①フランジ	②脚	③風胴	④排熱パイプ	⑤軸受管
	Dφ	P	Oφ	n-hφ	L	J	F	E	B	C	A	K	n-zφ	SS41	SS41	SPHC	SGP	SGP
TFC-50	510	555	590	12-9.5	750	705	40	580	220	440	660	335	4-11.5	L-40×40×5t	L-40×40×5t	2.3t	50A×3本	300A
-60	610	655	690		800	755		680	265	495	760	385						
-70	710	755	790	16-9.5	800	745	50	810	325	585	910	445	4-15	L-40×40×5t	L-50×50×6t	3.2t	50A×3本	350A
-75	760	805	840	16-11.5	915	860		860	350	610	960	470						
-80	810	855	890		24-11.5	1000	945	50	900	365	635	1000	495	6-15	L-50×50×6t	L-50×50×6t	4.5t	50A×4本
-90	910	965	1010	1100		1045	1080		445	735	1180	555	605					
-100	1015	1070	1115	24-13.5	1220	1165	65	1180	495	785	1280	605	6-19	L-50×50×6t	L-65×65×6t	4.5t	50A×4本	500A
-110	1115	1170	1215		1220	1165		1280	540	840	1380	655						
-120	1215	1290	1345	32-13.5	1220	1150	75	1400	570	960	1530	730	6-22	L-65×65×6t	L-65×65×6t	4.5t	90A×4本	500A
-135	1365	1440	1495		1220	1150		1470	570	1030	1600	810						
-150	1500	1570	1630	36-15	1350	1270	90	1660	710	1100	1810	885	6-22	L-65×65×6t	L-75×75×6t	4.5t	90A×4本	500A
-160	1600	1670	1730		1400	1320		1760	760	1150	1910	935						
-180	1800	1870	1930	40-15	1600	1510	90	1920	850	1250	2100	1040	6-22	L-90×90×9t	L-90×90×9t	4.5t	90A×4本	500A
-200	2000	2070	2130		1830	1735		2130	960	1350	2310	1160						

電動機側面取付型寸法及び材料 (電動機7.5kw以下)

# ●寸法表 (2)

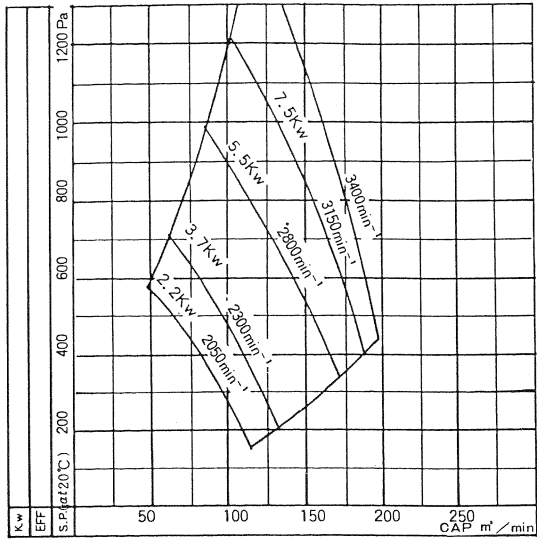


型式	11・15kw		18.5・22kw		30kw		37・45・55kw		75kw	① 架台	②脚・補強	寸法 (mm)					
	A	(H)	B	(H)	F	(H)	$n-z\phi$	(H)	(H)	SS41	SS41	D $\phi$	P	L	J	$n-h\phi$	L <sub>1</sub>
TFC-60	530	830	450	—	40	—	4-11.5	—	—	□-75×40×6t	L-40×40×5t	610	655	800	755	12-9.5	L-40×40×5
-70	650	870	550	—	50	—	4-15	—	—	□-100×50×6t	L-50×50×6t	710	755	800	745	16-9.5	
-75	700	900	600	—	50	—	4-15	—	—			810	855	1000	945	16-11.5	
-80	730	930	630	980	50	—	4-15	—	—			910	965	1100	1045	24-11.5	
-90	890	980	790	1030	50	1210	6-15	—	—	□-150×75×6t	L-65×65×6t	1015	1070	1220	1165	24-11.5	L-50×50×6
-100	990	1030	890	1080	50	1260	6-15	—	—			1115	1170	1220	1165	24-13.5	
-110	1080	1080	980	1130	50	1310	6-15	—	—			□-150×75×6t	L-90×90×9t	1215	1290	1220	1150
-120	1140	1160	1010	1210	65	1400	6-15	1450	—	1365	1440			1220	1150	36-15	
-135	1140	1230	1010	1280	65	1460	6-15	1510	—	1500	1570			1350	1270	36-15	
-150	1420	1350	1270	1400	75	1570	6-19	1620	—	1800	1870	1600	1510	40-15			
-160	1520	1400	1370	1450	75	1620	6-19	1670	—	□-150×75×6t	□-150×75×6t	2000	2070	1830	1735	40-15	
-180	1700	1500	1520	1550	90	1730	6-22	1780	—			2000	2070	1830	1735	40-15	
-200	1920	1650	1740	1700	90	1900	6-22	1950	2080	□-200×90×9t							

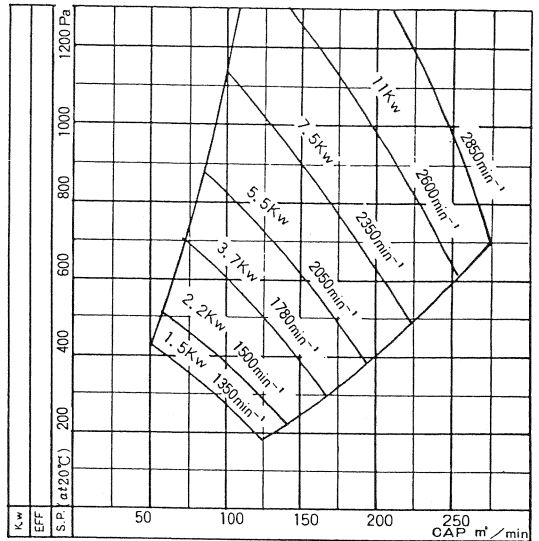
電動機下側取付型脚寸法及び材料 (電動機11kw以上)

# ● 排煙用チュブラーファン性能曲線図

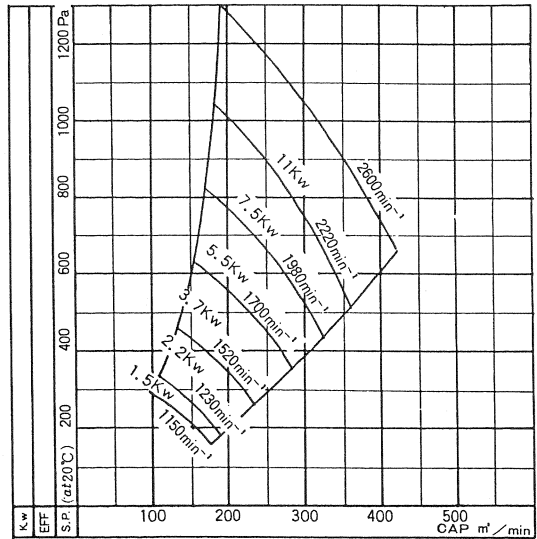
■ TFC-50



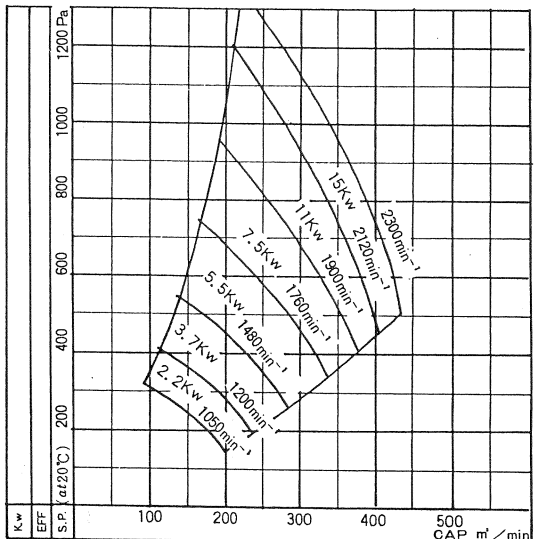
■ TFC-60



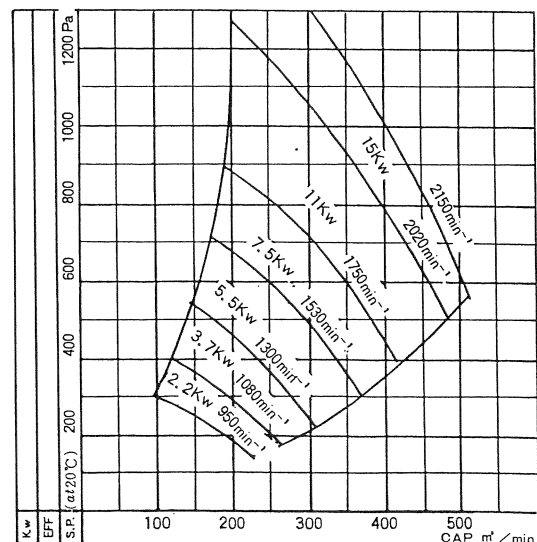
■ TFC-70



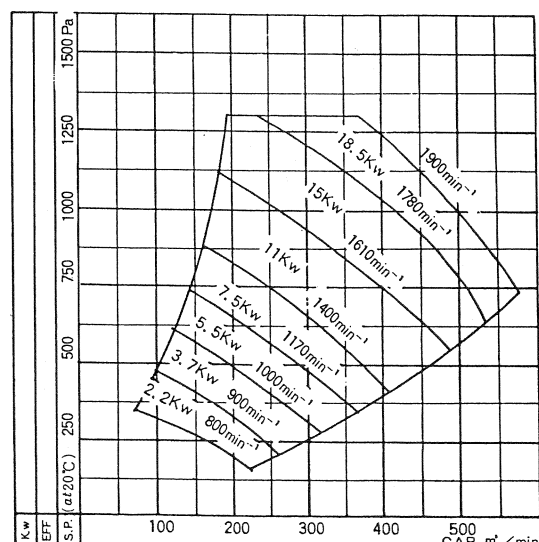
■ TFC-75



■ TFC-80

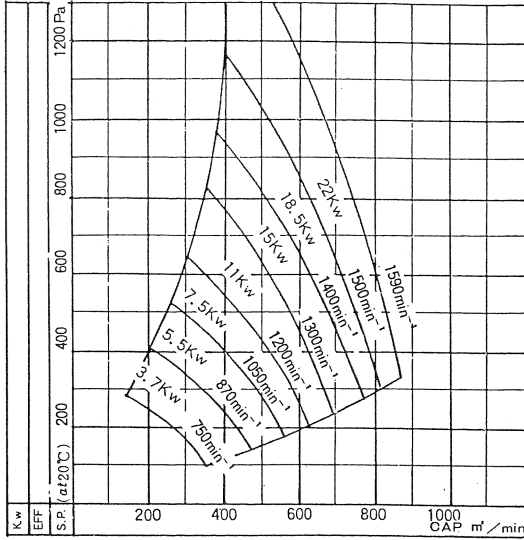


■ TFC-90

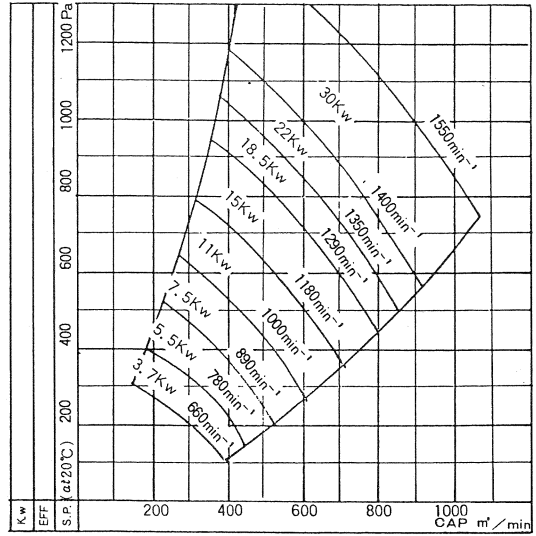


# ● 排煙用チュブラーファン性能曲線図

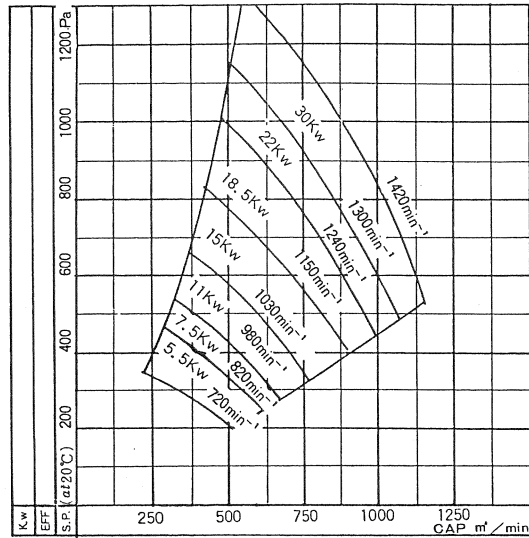
■ TFC-100



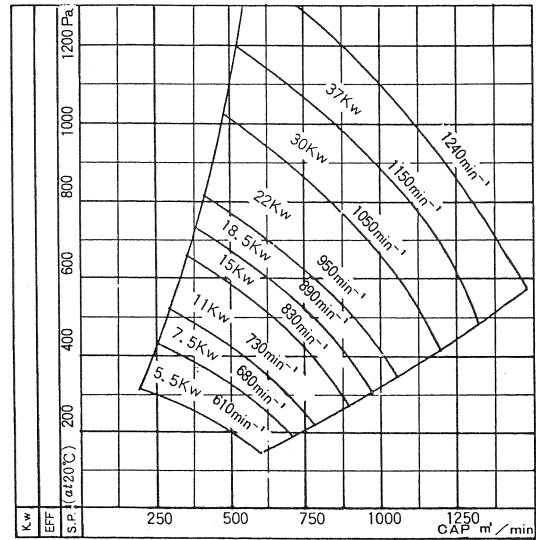
■ TFC-110



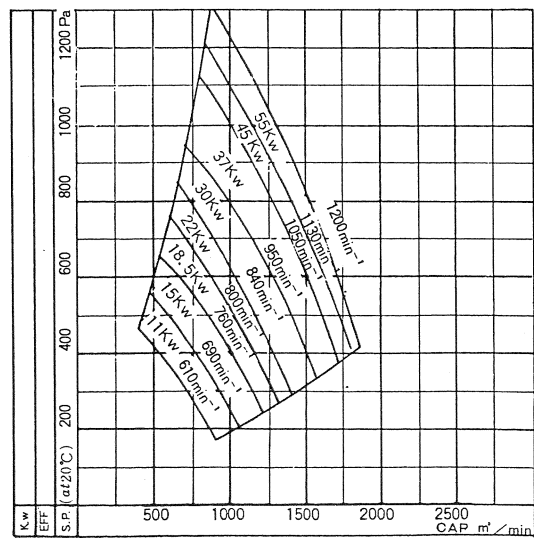
■ TFC-120



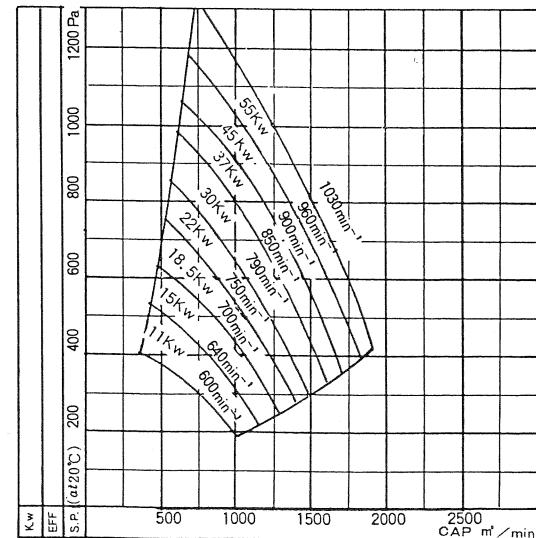
■ TFC-135



■ TFC-150

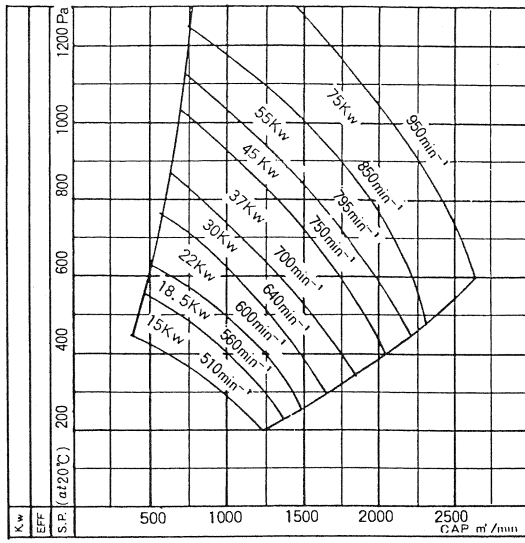


■ TFC-160



● 排煙用チュブラーファン性能曲線図

■ TFC-180



■ TFC-200

